

State of Wyoming Corner Record

(In compliance with the CORNER PERPETUATION AND FILING ACT, Wyoming Statutes, 1997, Section 33-29-140 et. seq., and the Rules and Regulations of the Board of Registration for Professional Engineers and Professional Land Surveyors)

Reverse side of this form may be used if more space is needed.

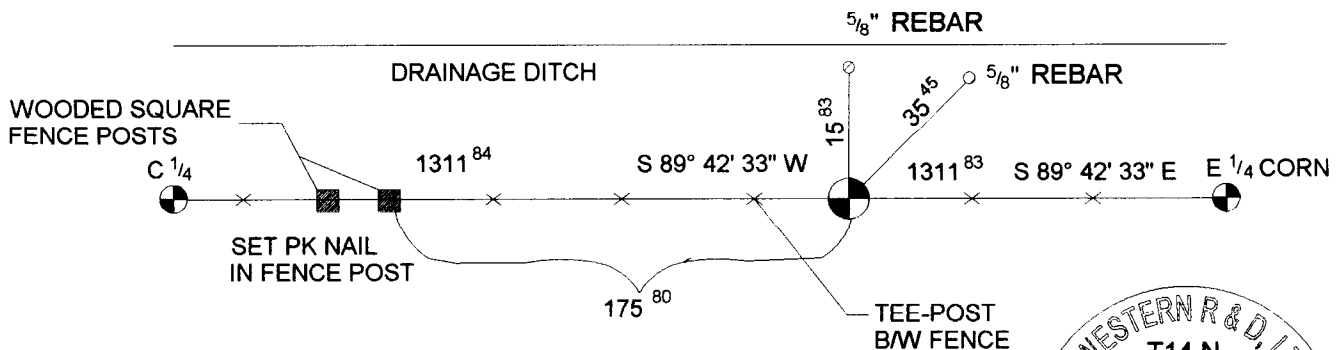
Record of original survey and citation of source of historical information (if corner is lost or obliterated). Description of corner monumentation evidence found and/or monument and accessories established to perpetuate the location of this corner. Sketch of relative location of monument, accessories, and reference points with course and distance to adjacent corner(s) (if determined in this survey). Method and rationale for reestablishment of lost or obliterated corner.

RECORD: NOTHING SET
 MONUMENT FOUND: NOTHING FOUND
 MONUMENT SET: SET 2 1/2" ALUMINUM
 CAP ON 5/8" REBAR, 24"
 LONG FLUSH W/ GROUND
 REFERENCES: SET 3 5/8" REBAR FOR REFERENCE

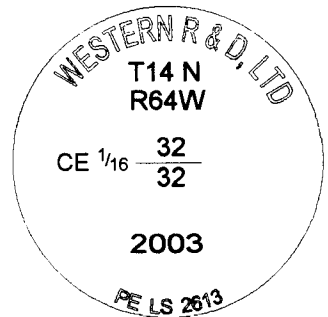


DRAINAGE DITCH

☉ DIRT ROAD



NOTE: CORNER WAS SET BY INTERSECTION AS PER 1973 MANUAL OF SURVEY INSTRUCTIONS



Date of Field Work: Sept 2003 Office Reference: T14 NR64W-260140

CROSS INDEX DIAGRAM

| | | | | | | | | | | | | | | | | | | | | | | | | | | |
|---|---|----|----|----|----|----|----|---|---|----|----|----|----|----|----|----|----|----|----|----|----|----|----|----|----|----|
| | 1 | 2 | 3 | 4 | 5 | 6 | 7 | 8 | 9 | 10 | 11 | 12 | 13 | 14 | 15 | 16 | 17 | 18 | 19 | 20 | 21 | 22 | 23 | 24 | 25 | 26 |
| A | | | | | | | | | | | | | | | | | | | | | | | | | | |
| B | | | | | | | | | | | | | | | | | | | | | | | | | | |
| C | | 6 | 5 | 4 | 3 | 2 | 1 | | | | | | | | | | | | | | | | | | | |
| D | | | | | | | | | | | | | | | | | | | | | | | | | | |
| E | | | | | | | | | | | | | | | | | | | | | | | | | | |
| F | | | | | | | | | | | | | | | | | | | | | | | | | | |
| G | | 7 | 8 | 9 | 10 | 11 | 12 | | | | | | | | | | | | | | | | | | | |
| H | | | | | | | | | | | | | | | | | | | | | | | | | | |
| J | | | | | | | | | | | | | | | | | | | | | | | | | | |
| K | | | | | | | | | | | | | | | | | | | | | | | | | | |
| L | | 18 | 17 | 16 | 15 | 14 | 13 | | | | | | | | | | | | | | | | | | | |
| M | | | | | | | | | | | | | | | | | | | | | | | | | | |
| N | | | | | | | | | | | | | | | | | | | | | | | | | | |
| O | | | | | | | | | | | | | | | | | | | | | | | | | | |
| P | | 19 | 20 | 21 | 22 | 23 | 24 | | | | | | | | | | | | | | | | | | | |
| Q | | | | | | | | | | | | | | | | | | | | | | | | | | |
| R | | | | | | | | | | | | | | | | | | | | | | | | | | |
| S | | | | | | | | | | | | | | | | | | | | | | | | | | |
| T | | 30 | 29 | 28 | 27 | 26 | 25 | | | | | | | | | | | | | | | | | | | |
| U | | | | | | | | | | | | | | | | | | | | | | | | | | |
| V | | | | | | | | | | | | | | | | | | | | | | | | | | |
| W | | | | | | | | | | | | | | | | | | | | | | | | | | |
| X | | 31 | 32 | 33 | 34 | 35 | 36 | | | | | | | | | | | | | | | | | | | |
| Y | | | | | | | | | | | | | | | | | | | | | | | | | | |
| Z | | | | | | | | | | | | | | | | | | | | | | | | | | |

Firm/Agency, Address

Roger H. Krum, PE & PLS2613
 Western R & D, Ltd.
 5908 Yellowstone Rd Suite B
 Cheyenne, Wyoming 82001

Telephone Number: 307 632 5656

This corner record was prepared by me or under my direction and supervision.
 SEAL & SIGNATURE



RECORDED 5/24/2005 AT 1:48 PM REC# 417605 JK# 1882 PG# 1238
 DEBRA K. LATHROP, CLERK OF LARAMIE COUNTY, WY PAGE 1 OF 1

Corner Name: Center East 1/4 section 32

Section: 32 T/4 N R64W ; 6th P.M. Cross-Index No.: X-8